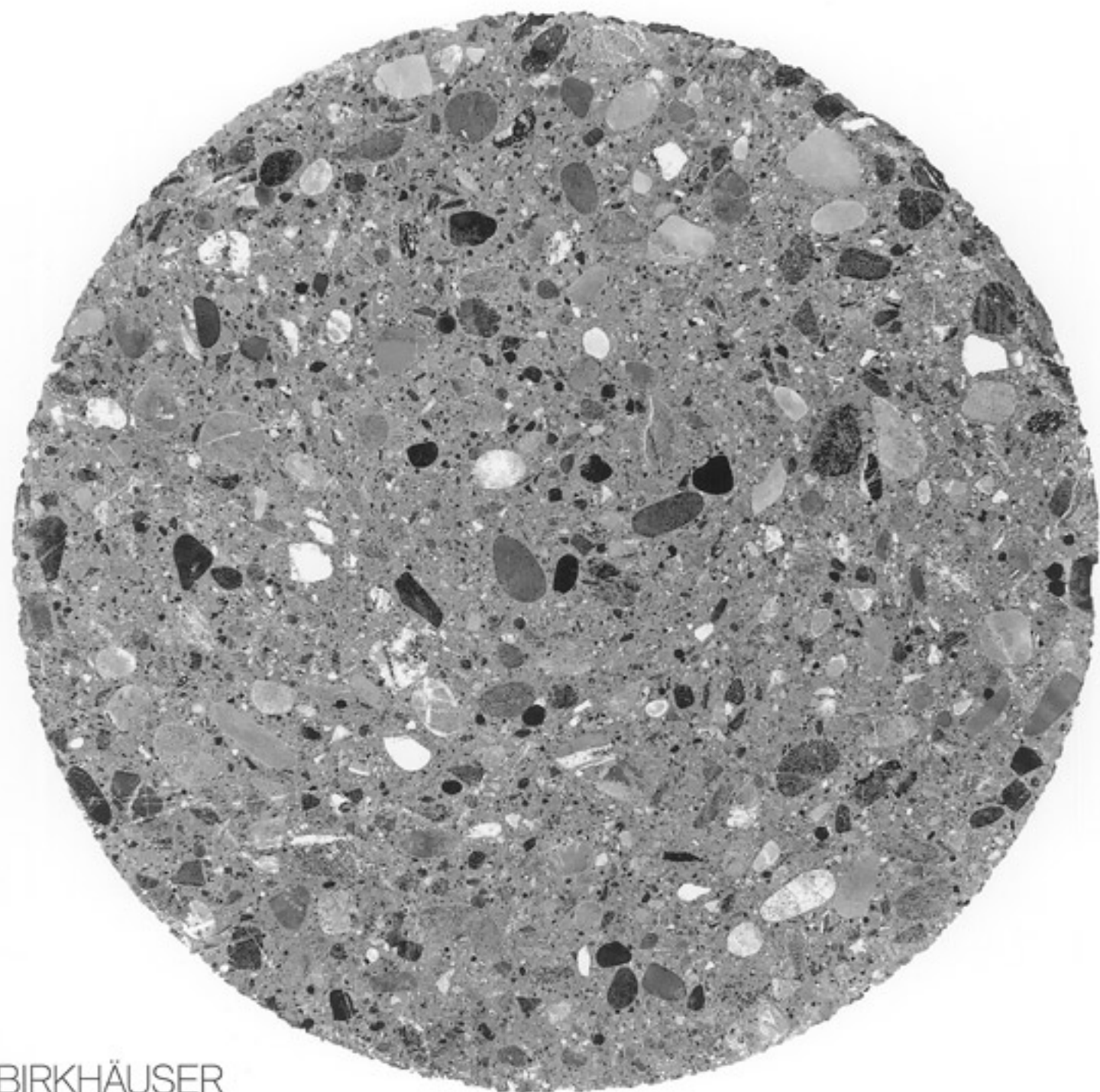


MADE OF
CONCRETE

METTLER
STUDER

BUK
ETHZ

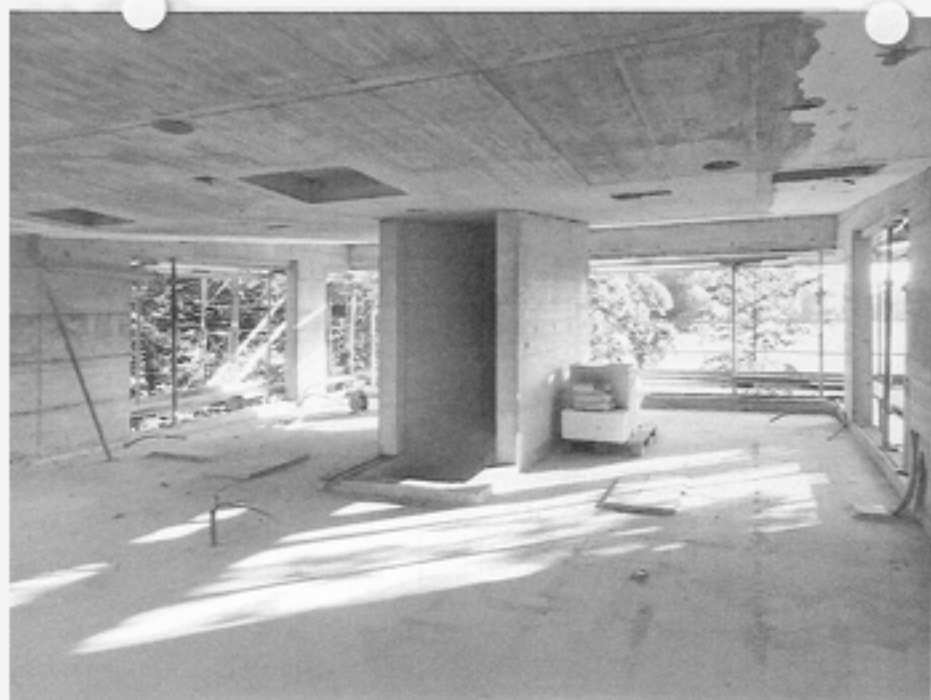


BIRKHÄUSER

05 SANDMEIER RESIDENCE,
VEYRIER LACROIX CHESSEX
ARCHITECTS



The load-bearing concrete construction with internal insulation takes up the facades and determines the appearance; short wall slabs and solid floor slabs, vertical and horizontal components, together create a repeating T-shaped motif. The floor slabs do not feature a separating joint at the thermal boundary and cantilever out. Local insulation inserts prevent the formation of condensate. (t)



05

